

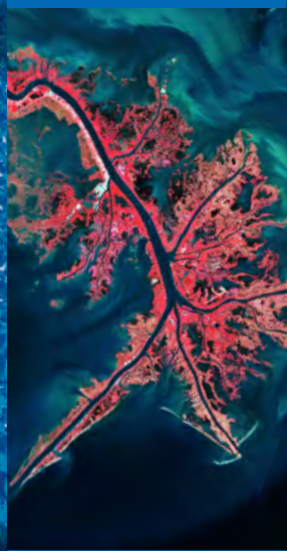
Credits: Copernicus-modified Copernicus Sentinel data (2016), processed by ESA



Atmosphere



Biosphere



Hydrosphere



Lithosphere



Cryosphere

Graphic Design: ReMedia IT - www.remediagroup.it

The project is funded by the EC, managed by ESA and operated by ESA and its partners.

RUS-Copernicus



RUS-Copernicus



Follow us:



RUS-Copernicus.eu

Check the conditions of use on the RUS Portal. More information and registration:

Register online and start your RUS experience!  
In just a few clicks, you can request your VM and get all the support you need to download, process, analyse and visualise Sentinel data for free.



# RUS

Research and User Support for Sentinel Core Products

A NEW EXPERT SERVICE FOR SENTINEL USERS

# Free and Open

Available to everyone, from first-time data users to specialist users such as researchers, scientists, trainers, decision-makers and public authorities

# Expertise

Support team with a strong experience on Earth Observation applications and Sentinel sensors to help users tap into and exploit Sentinel data resources

# Services

- Face to face training sessions, Webinars and e-learning material
- Fast download of Sentinel data in a powerful computing environment based on customisable Virtual Machines and Open Source Software
- Personalised advice and assistance